

ETICS wood fiber protect

Natural thermal insulation composite system with Fibertherm protect wood fiber panels

Beton Wood

Complete internal insulating wall systems with high performances



DESCRIPTION

The complete internal thermal insulation composite system with high performance ETICS wood fiber protect guarantees the maximum comfort and maximum durability over time, with the international ETA certification.

The thermal composite system wood fiber panels type FiberTherm protect are rigid insulating panels with densities 230 and 265 kg/m³, with a high resistance to compression and water repellents.

The ETICS wood fiber protect system consists in the installation of wood fiber panels on the internal side of the building which improves the energy efficiency in a lasting way.

The materials used are completely natural and made with sustainable raw materials and life cycles.

The stratigraphy consists of breathable and plasterable wood fiber panels for high quality thermal insulation Fibertherm protect, FSC® certified, which have densities 230 and 265kg/m³. The wood fiber panels are fixed with special plugs type Betonfix FIF-CS8 on masonry and Betonfix 6H-NT on wood support (x-lam o platform). On the external side a first skimming layer of BetonAR1 GG must be placed, then, a glass fiber net for wood fiber application BetonGlass 160 and a second skimming layer BetonAR1 GG type must be installed.

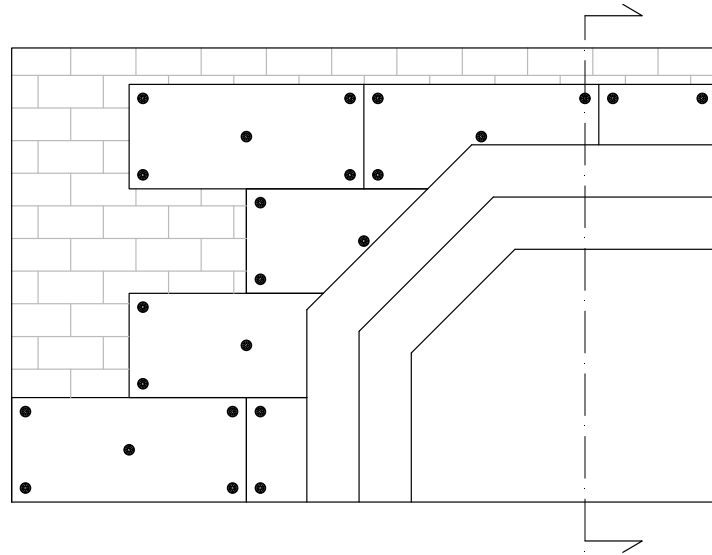
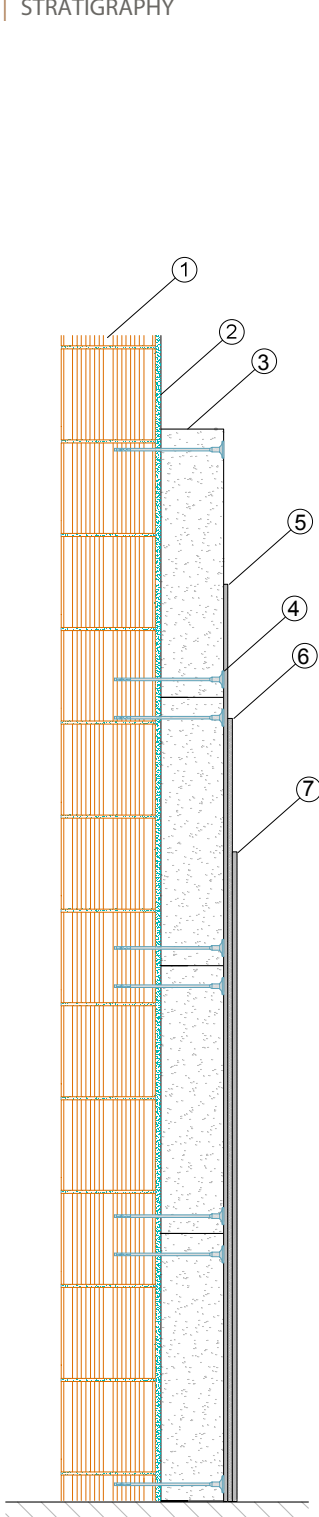
Advantages

- Approved and secure fixing system: 750kg each panel
- Complete system: insulation, skimming layers, installation products and accessories
- High insulation thicknesses reachable; up to 16cm with a single layer
- Insulation in continuous composite system without thermal bridges and condensation
- Various thicknesses available and tongue and groove profile
- Excellent thermal and acoustic insulation
- Applicable on concrete, solid and perforated brick, Poroton brick, cellular concrete and lightened, solid wood panels, X-Lam

For more informations about the uses and the installation, our offices are ready to answer your questions on www.betowood.com



STRATIGRAPHY



- 1 Masonry or x-lam wall
- 2 Beton AR1 GG Monocomponent cementitious mortar for bonding and smoothing thermal insulation panels and "thermal insulation composite systems" (ETICS).
- 3 Wood fiber **Fibertherm protect** Plasterable wood fiber panels available in two different densities 230 and 265 kg/m³ with an high compressive resistance, water-proof, excellent in the realization of certified thermal composite system.
- 4 **Betonfix FIF-CS8 - ON MASONRY** - Screwing fastening for materials of external thermal insulation composite systems (ETICS). The composite screw minimizes the thermal bridge.
or
Betonfix 6H-NT - ON WOOD - Flush or retractable fixing for external thermal insulation composite systems (ETICS) with certified Power-Fast screw.
- 5 Beton AR1 GG Monocomponent cementitious mortar for bonding and smoothing thermal insulation panels and "thermal insulation composite systems" (ETICS).
- 6 **Net BetonGlass 160** Alkali-resistant glass fiber reinforcement net, with a density of 160 kg/m³, suitable for the reinforcement of skimming layers on new or recovered plasters, designed for insertion into thermal insulation systems in wood-fiber coat.
- 7 Beton AR1 GG Monocomponent cementitious mortar for bonding and smoothing thermal insulation panels and "thermal insulation composite systems" (ETICS).



| SYSTEM'S PRODUCTS



BetonGlass 160 Alkali-resistant glass fiber reinforcement net, suitable for reinforcing skimming layer on new or recovered plasters, designed for insertion into thermal insulation systems. 50 mq rolls.

Yield 1.10 sqm required per effective square meter.



BetonAR1 GG Monocomponent cementitious mortar for bonding and smoothing thermal insulation panels and "thermal insulation composite systems" (ETICS). Consumption:

- 4,0 - 6,0kg/m² depending on the bonding technique.
- 1,35-1,55kg/m² per mm of thickness as skimming layer (recommended: approx. 4 mm within 2 hands).

Application: spatula



ON MASONRY - **BetonFix FIF-CS8** The composite screw minimizes the thermal bridge so that no traces appear on the façade. Less bit wear and puncture time thanks to a minimum installation depth of 35 mm in the support. The disc adapts perfectly to the insulation allowing the application of thin skimming layers.



ON WOOD - **BetonFix 6H-NT** Pre-assembled fastening with the Power-Fast certified screw. This guarantees a secure grip on the support material. The minimum screwing depth of 30 mm ensures fast assembly. It is not necessary to pre-drill.



FiberTherm Protect Plasterable wood fiber panels available in two different densities 230 and 265 Kg/m³ with an high compressive resistance, water-proof, excellent in the realization of certified thermal composite system. Declared thermal coefficient λ_D [W/(m*k)] 0,046÷0,048. Available in the following sizes: 2.800x1.250 mm, 2.625x1.175mm, 1.350x600mm. Thickness from 20 to 100 mm.

BETONWOOD Srl

Head office:
Via Falcone e Borsellino, 58
I-50013 Campi Bisenzio (FI)

T: +39 055 8953144
F: +39 055 4640609

info@betonwood.com
www.betonwood.com

PIFTHP - ST R.18.5

| CERTIFICATIONS

The ETICS wood fiber protect internal wall insulation system is manufactured with CE certified materials in accordance with current regulations.

The certificates of the individual products are available on request.

Beton Wood

