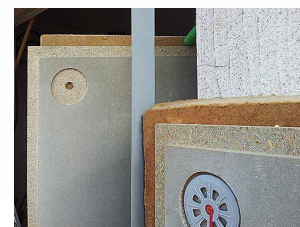
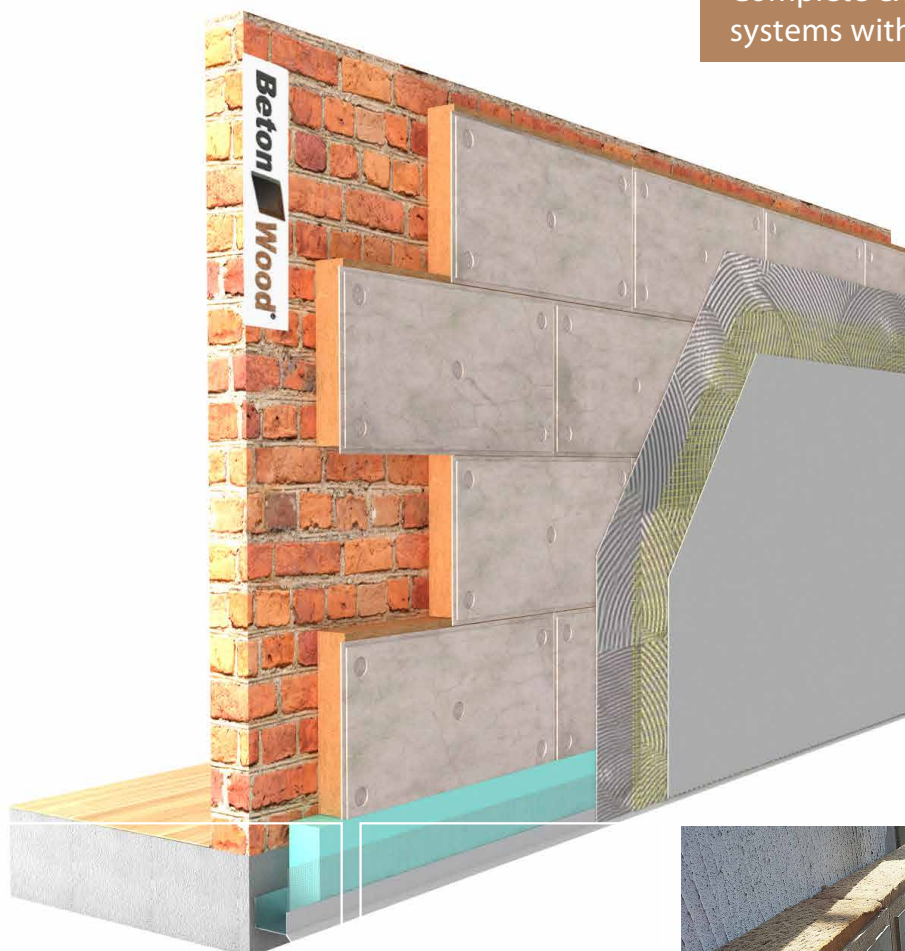


# ETICS betontherm fiber

Reinforced thermal insulation composite system with cement bonded particle boards and wood fiber panels

# Beton Wood

Complete external insulating wall systems with high performances



## | DESCRIPTION

The complete reinforced thermal insulation composite system with high performance ETICS betontherm fiber guarantees the maximum comfort and maximum durability over time, with the international ETA certification.

It is the ideal system for the realization of thermo-acoustic insulation in external composite system with high mechanical strength and an excellent thermal displacement, both internal and external, of the perimeter walls and suitable both for traditional constructions and for dry wooden systems.

The external wall system ETICS betontherm fiber consists in an insulating and reinforced covering using panels with high mechanical resistance Betontherm Fiber which acts as a highly performing building envelope.

The stratigraphy consists of panels in cement bonded particle boards and wood fiber Fibertherm panels for high quality armored thermal composite system Betontherm fiber certified CE, fixed with Betonfix FIF-CS8 on masonry and with Betonfix 6H-NT on wood support; the panels are then laid on a starting base composed of a BetonDripstarterPVC drip tray which guarantees excellent protection against rising damp. On the external side a first skimming layer of BetonAR1 must be placed, then, a glass fiber net BetonGlass 360 and a second skimming layer BetonAR1 type must be installed.

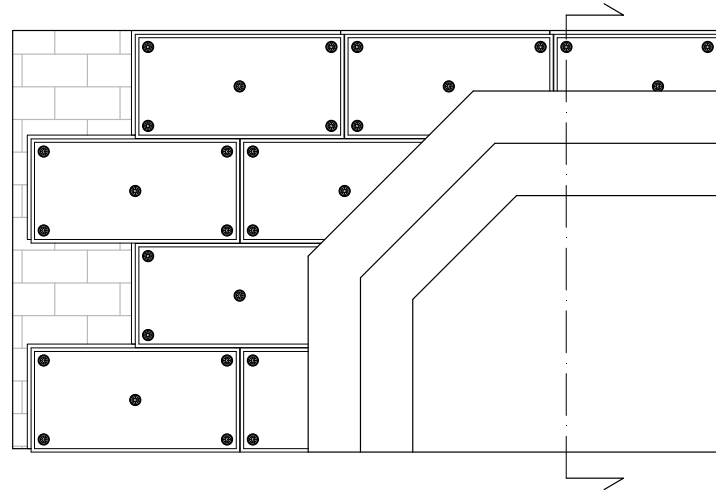
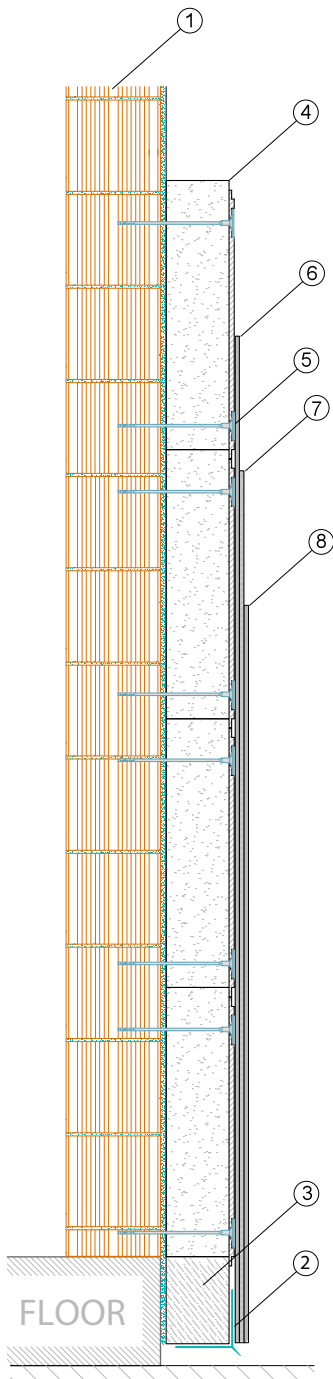
### Advantages

- Approved and secure fixing system: 750kg each panel
- Complete system: insulation system, skimming layers, installation products and accessories
- High insulation thicknesses reachable; up to 12cm with a single layer
- For continuous thermal insulation without condensation
- Various thicknesses available and stepped profile
- Excellent thermal and acoustic insulation
- Fire resistance class A2
- Excellent mechanical resistance against burglary, antivandalism

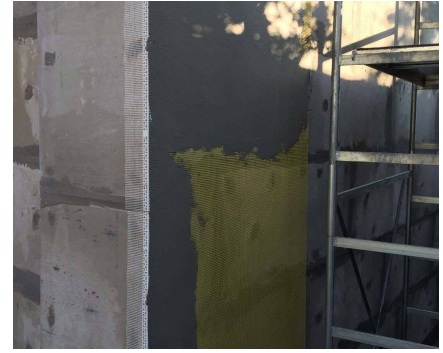
For more informations about the uses and the installation, our offices are ready to answer your questions on [www.betowood.com](http://www.betowood.com)



STRATIGRAPHY



- 1 Masonry or x-lam wall
- 2 Angular starter base **Beton DripStarter** PVC PVC profile with thermosealed glass fiber mesh 165 gr / mq certified ETAG004. Sealed connection between the starting base and the armed skim layer. It interrupts the flow of water avoiding infiltrations. Prevents cracking in the plinth area.
- 3 \*optional in **BetonTherm Fiber - Styx XPS panel** h30 cm Starting panel in Styx XPS extruded polystyrene that protects the panels from rising damp coming from the bottom.
- 4 **ETICS Betontherm fiber** Reinforced thermal insulation composite system composed by two layer already coupled: the first, high density cement bonded particle board **BetonWood**, and the second, wood fiber panel **Fibertherm**. Fire-proof, burglar-proof, thermal-acoustic insulation easy to install.
- 5 **Betonfix FIF-CS8 - ON MASONRY** - Screwing fastening for materials of external thermal insulation composite systems (ETICS). The composite screw minimizes the thermal bridge.  
or  
**Betonfix 6H-NT - ON WOOD** - Flush or retractable fixing for external thermal insulation composite systems (ETICS) with certified Power-Fast screw.
- 6 **Beton AR1** Monocomponent cementitious mortar for bonding and smoothing of thermal insulation panels and **BetonTherm** "reinforced thermal insulation composite systems".
- 7 **Glassfiber net BetonGlass 360** Glass fiber net with density 360 g/m<sup>3</sup> warp-proof and alkali-resistant, used in armored thermal insulation systems. Indispensable in **BetonTherm** systems.
- 8 **Beton AR1** Monocomponent cementitious mortar for bonding and smoothing of thermal insulation panels and **BetonTherm** "reinforced thermal insulation composite systems".



## SYSTEM'S PRODUCTS



**BetonGlass 360** The net has density 360 g/m<sup>3</sup> and complies with the ETAG004 Guideline for ETICS (External Thermal Insulation Composite System), as certified by IFBT GmbH-MFPA Leipzig GmbH. It is suitable for internal and external armored thermal insulation (suitable for any type of BetonTherm product). 50 m<sup>2</sup> rolls.



**RECOMMENDED - BetonAR1** Monocomponent cementitious mortar for bonding and smoothing of thermal insulation panels and BetonTherm "reinforced thermal insulation composite systems".  
• 4,0 - 6,0kg/m<sup>2</sup> depending on the gluing technique  
• 1,3 - 1,5kg/m<sup>2</sup> per mm of skimming layer thickness (recommended: approx. 4 mm within 2 hands).  
Application: spatula



**ON MASONRY - BetonFix FIF-CS8** The composite screw minimizes the thermal bridge so that no traces appear on the façade. Less bit wear and puncture time thanks to a minimum installation depth of 35 mm in the support. The disc adapts perfectly to the insulation allowing the application of thin skimming layers.



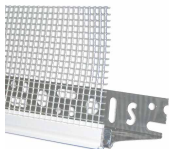
**ON WOOD - BetonFix 6H-NT** Pre-assembled fastening with the Power-Fast certified screw. This guarantees a secure grip on the support material. The minimum screwing depth of 30 mm ensures fast assembly. It is not necessary to pre-drill.



**BetonTherm fiber** It is the ideal system for the realization of thermo-acoustic insulation composite system with high mechanical resistance and high thermal displacement in cement bonded particle board and natural wood fiber Fibertherm panels. Excellent fire resistance (class A2) and mechanical resistance that make this system optimal for public buildings, escape routes, places where safety is important. Available in the format with stepped profile 1.200x600 mm, 1.200x480mm and 1.200x500mm. Thicknesses from 96 to 180 mm.



\* optional in **BetonTherm Fiber - Styx XPS** Starting panel in Styx XPS extruded polystyrene that protects the panels from rising damp coming from the bottom.



**BetonDripStarter PVC** PVC profile with thermosealed glass fiber mesh 165 gr / mq certified ETAG004. Sealed connection between the starting base and the armored skimming layer. It interrupts the flow of water avoiding infiltrations. Prevents cracking in the plinth area. Size 2,5x0,125 m. 25 pieces/package.

BETONWOOD Srl

Head office :  
Via Falcone e Borsellino, 58  
I-50013 Campi Bisenzio (FI)

T: +39 055 8953144  
F: +39 055 4640609

info@betonwood.com  
www.betonwood.com

PEBTHF - ST R.18.5

## CERTIFICATIONS

The insulation system for external walls ETICS Betontherm fiber is made with CE certified materials in accordance with current regulations. The certificates of the individual products are available on request.



GENERAL SECURITY INSURANCE GUARANTEE  
ON THE PRODUCT WITH CORRECT DOCUMENTED  
INSTALLATION WITH PHOTOGRAPHS

**Beton Wood**